



## FABRICS FOR OUTDOOR USE

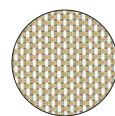
Polyester/PVC composite

Colours on stock:



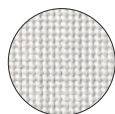
CHOCOLATE

Single wire fabric



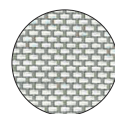
SANDLE DUO

Double wire fabric



WHITE

Single wire fabric



GREY DUO

Double wire fabric

Note: Many other colors (single fabric) are available on request!**DREAM LINE (Batyline version)** design Marco Acerbis

Sdraietta

Anno di produzione: 2015

Versioni: Laccata.

Materiali: Poliuretano, tessile.

Dimensioni: 63 x 74 h 72 cm

Peso: 8 Kg

Imballaggio: 86 x 82 x 72 cm

Volume imballaggio: 0,507 m<sup>3</sup>

Chaise

Année de production: 2015

Versions: Laquée.

Matériaux: Polyuréthane, textile.

Dimensions: 63 x 74 h 72 cm

Poids: 8 Kg

Emballage: 86 x 82 x 72 cm

Volume emballage: 0,507 m<sup>3</sup>

Little chair

Year of production: 2015

Versions: Lacquered.

Material: Polyurethane, textile.

Dimensions: 63 x 74 h 72 cm

Weight: 8 Kg

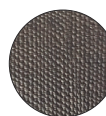
Packaging: 86 x 82 x 72 cm

Packaging volume: 0,507 m<sup>3</sup>

DIMENSIONS (cm)		
CODE	SL DRM070 chocolate	
	SL DRM071 white	
COLOURS	SL DRM072 sandle duo	
	SL DRM073 grey duo	
COLOURS	LACQUERED (code GLOSSY/MATT)	
	○ ABSOLUTE WHITE (code QA/MF)	
	● GLAMOUR BLACK (code QH/MI)	
	● VANITY GREY (code QG/MK)	
	● CHARMING IVORY (code Q2/M3)	
	● SUPREME RED (code QD/MN)	
	● METALLIC GOLD (code QO/MZ)	
	● METALLIC SILVER (code QM/MY)	
	● METALLIC COPPER (code Q4/M5)	
	● CHOCOLATE BROWN (code QE/M6)	



FABRICS FOR OUTDOOR USE  
Synthetic leather with anti-mildew treatment  
Colours on stock:



CHOCOLATE



SAND



WHITE

## DREAM LINE (Padded version) design Marco Acerbis



Sdraietta

Anno di produzione: 2015

Versions: Laccata.

Materiali: Poliuretano, tessile.

Dimensioni: 63 x 74 h 72 cm

Peso: 8 Kg

Imballaggio: 86 x 82 x 72 cm

Volume imballaggio: 0,507 m<sup>3</sup>

Chaise

Année de production: 2015

Versions: Laquée.

Matériaux: Polyuréthane, textile.

Dimensions: 63 x 74 h 72 cm

Poids: 8 Kg

Emballage: 86 x 82 x 72 cm

Volume emballage: 0,507 m<sup>3</sup>

Little chair

Year of production: 2015

Versions: Lacquered.

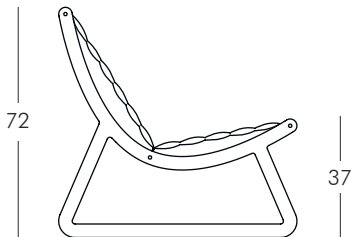
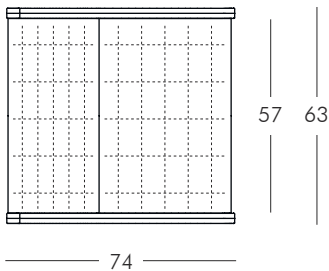



Material: Polyurethane, textile.

Dimensions: 63 x 74 h 72 cm

Weight: 8 Kg

Packaging: 86 x 82 x 72 cm

Packaging volume: 0,507 m<sup>3</sup>

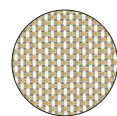
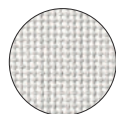
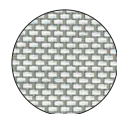
DIMENSIONS (cm)	 
CODE	<div> SL DRN070 chocolate  </div> <div> SL DRN072 sandle  </div> <div> SL DRN071 white  </div>
COLOURS	<p><b>LACQUERED</b> (code GLOSSY/MATT)</p> <ul style="list-style-type: none"> <li>○ ABSOLUTE WHITE (code QA/MF)</li> <li>● GLAMOUR BLACK (code QH/MI)</li> <li>● VANITY GREY (code QG/MK)</li> <li>● CHARMING IVORY (code Q2/M3)</li> <li>● SUPREME RED (code QD/MN)</li> <li>● METALLIC GOLD (code QO/MZ)</li> <li>● METALLIC SILVER (code QM/MY)</li> <li>● METALLIC COPPER (code Q4/M5)</li> <li>● CHOCOLATE BROWN (code QE/M6)</li> </ul>



## FABRICS FOR OUTDOOR USE

Polyester/PVC composite

Colours on stock:

CHOCOLATE  
Single wire fabricSANDLE DUO  
Double wire fabricWHITE  
Single wire fabricGREY DUO  
Double wire fabricNote: Many other colors (single fabric) are available on request!**DREAM LINE FEET UP (Batyline version)** design Marco Acerbis

Poggiapiedi

Anno di produzione: 2016

Versioni: Laccata.

Materiali: Poliuretano, tessile.

Dimensioni: 63 x 61 h 37 cm

Peso: 6 Kg

Imballaggio: 71 x 71 x 40 cm

Volume imballaggio: 0,201 m<sup>3</sup>

Repose-pied

Année de production: 2016

Versions: Laquée.

Matériaux: Polyuréthane, textile.

Dimensions: 63 x 61 h 37 cm

Poids: 6 Kg

Emballage: 71 x 71 x 40 cm

Volume emballage: 0,201 m<sup>3</sup>

Footrest

Year of production: 2016

Versions: Lacquered.

Material: Polyurethane, textile.

Dimensions: 63 x 61 h 37 cm

Weight: 6 Kg

Packaging: 71 x 71 x 40 cm

Packaging volume: 0,201 m<sup>3</sup>

DIMENSIONS (cm)		
CODE	SL FTM070 chocolate	SL FTM072 sandle duo
	SL FTM071 white	SL FTM073 grey duo
COLOURS	<p><b>LACQUERED</b> (code GLOSSY/MATT)</p> <ul style="list-style-type: none"> <li>○ ABSOLUTE WHITE (code QA/MF)</li> <li>● GLAMOUR BLACK (code QH/MI)</li> <li>● VANITY GREY (code QG/MK)</li> <li>● CHARMING IVORY (code Q2/M3)</li> <li>● SUPREME RED (code QD/MN)</li> <li>● METALLIC GOLD (code QO/MZ)</li> <li>● METALLIC SILVER (code QM/MY)</li> <li>● METALLIC COPPER (code Q4/M5)</li> <li>● CHOCOLATE BROWN (code QE/M6)</li> </ul>	



FABRICS FOR OUTDOOR USE  
Synthetic leather with anti-mildew treatment  
Colours on stock:



## DREAM LINE FEET UP (Padded version) design Marco Acerbis



Poggiapiedi

Anno di produzione: 2016

Versions: Laccata.

Materiali: Poliuretano, tessile.

Dimensioni: 63 x 61 h 37 cm

Peso: 6 Kg

Imballaggio: 71 x 71 x 40 cm

Volume imballaggio: 0,201 m<sup>3</sup>

Repose-pied

Année de production: 2016

Versions: Laquée.

Matériaux: Polyuréthane, textile.

Dimensions: 63 x 61 h 37 cm

Poids: 6 Kg

Emballage: 71 x 71 x 40 cm

Volume emballage: 0,201 m<sup>3</sup>

Footrest

Year of production: 2016

Versions: Lacquered.

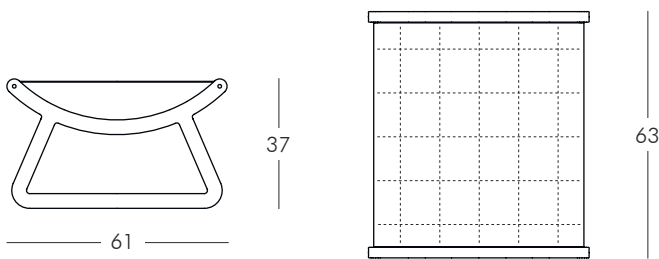



Material: Polyurethane, textile.

Dimensions: 63 x 61 h 37 cm

Weight: 6 Kg

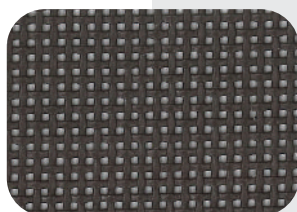
Packaging: 71 x 71 x 40 cm

Packaging volume: 0,201 m<sup>3</sup>

DIMENSIONS (cm)		
CODE	SL FTN070 chocolate 	SL FTN072 sandle 
	SL FTN071 white 	
COLOURS	LACQUERED (code GLOSSY/MATT)	
	<ul style="list-style-type: none"> <li>○ ABSOLUTE WHITE (code QA/MF)</li> <li>● GLAMOUR BLACK (code QH/MI)</li> <li>● VANITY GREY (code QG/MK)</li> <li>● CHARMING IVORY (code Q2/M3)</li> <li>● SUPREME RED (code QD/MN)</li> <li>● METALLIC GOLD (code QO/MZ)</li> <li>● METALLIC SILVER (code QM/MY)</li> <li>● METALLIC COPPER (code Q4/M5)</li> <li>● CHOCOLATE BROWN (code QE/M6)</li> </ul>	

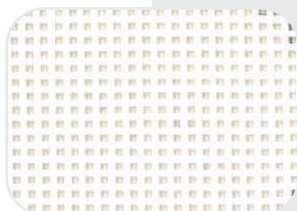
# BATYLINE® VERSION

Polyester/PVC composite - fabrics for outdoor use



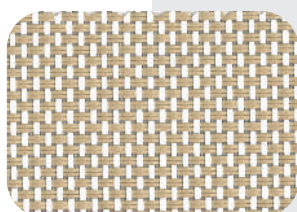
## .CHOCOLATE

Single wire fabric  
SL DRM070



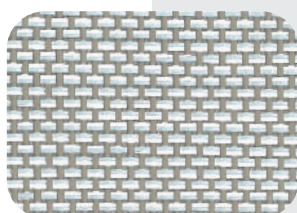
## .WHITE

Single wire fabric  
SL DRM071



## .SANDLE DUO

Double wire fabric  
SL DRM072



## .GREY DUO

Double wire fabric  
SL DRM073



# PADDED VERSION

Synthetic leather with anti-mildew treatment - fabrics for outdoor use



## .CHOCOLATE

SL DRN070



## .WHITE

SL DRN071



## .SANDLE

SL DRN072

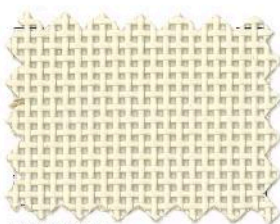




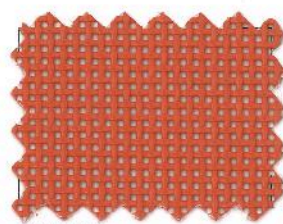
# BATYLINE® colours on request



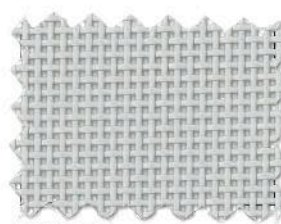
7407-5001



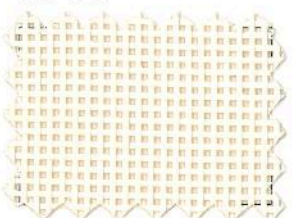
7407-5375



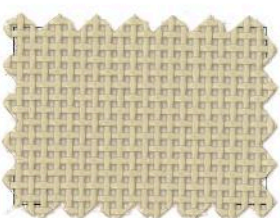
7407-5381



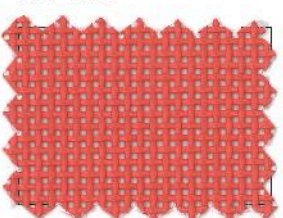
7407-5374



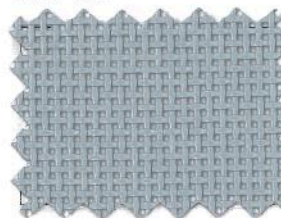
7407-5029



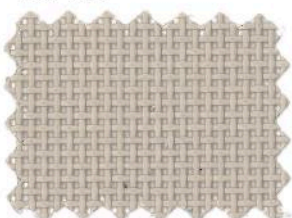
7407-5378



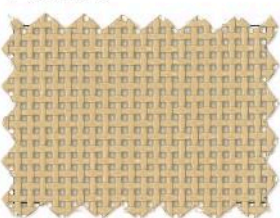
7407-5371



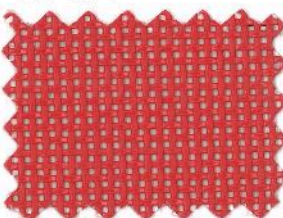
7407-5003



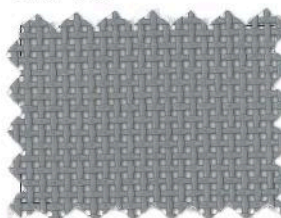
7407-5376



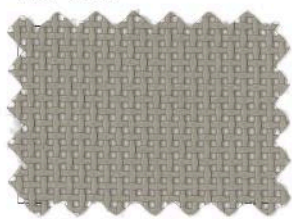
7407-5013



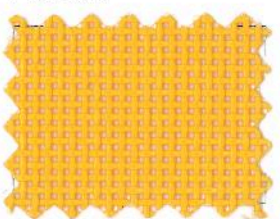
7407-5011



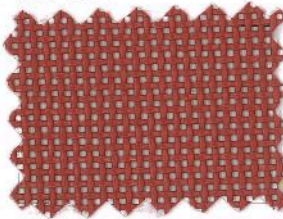
7407-5382



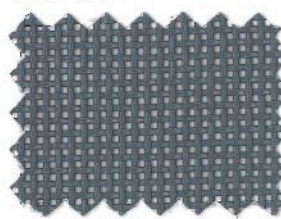
7407-5014



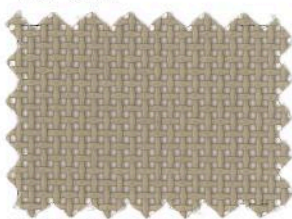
7407-5017



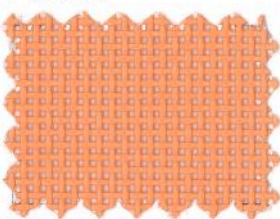
7407-5370



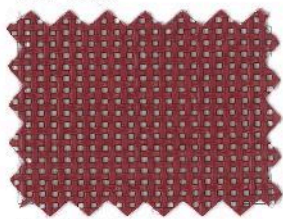
7407-5004



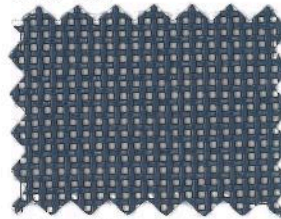
7407-5379



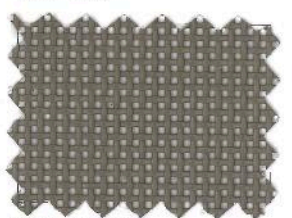
7407-50417



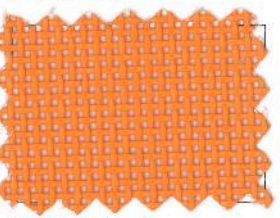
7407-5012



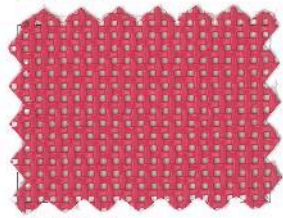
7407-5065



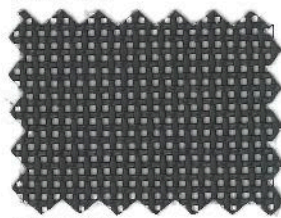
7407-50070



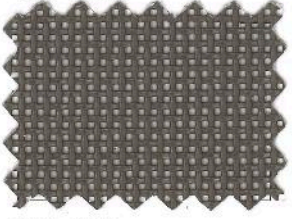
7407-5329



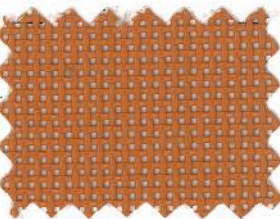
7407-5336



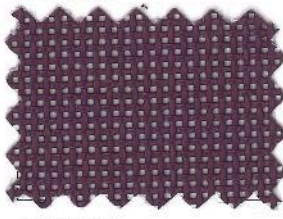
7407-5700



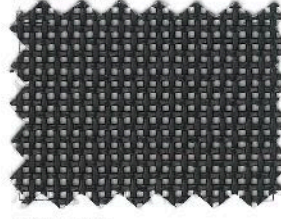
7407-5015



7407-5016



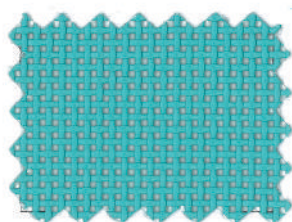
7407-5349



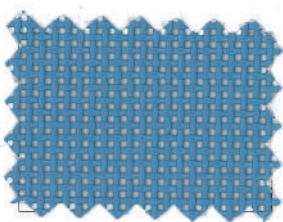
7407-5005



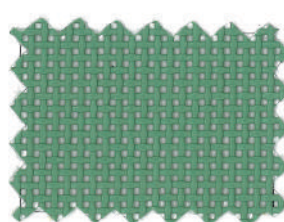
## BATYLINE® colours on request



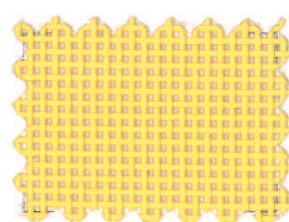
7407-5363



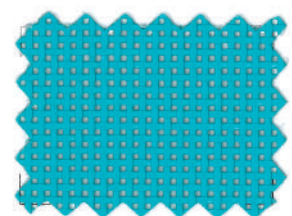
7407-50416



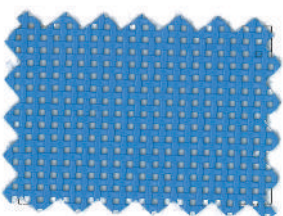
7407-5365



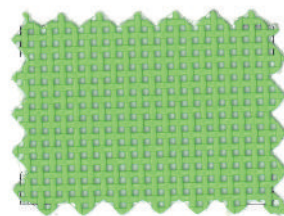
7407-5018



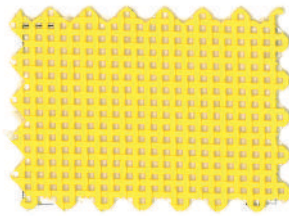
7407-5347



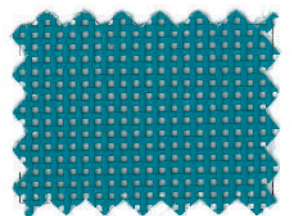
7407-5009



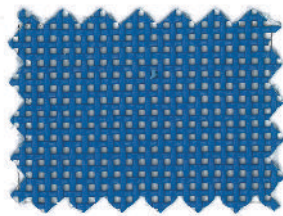
7407-5063



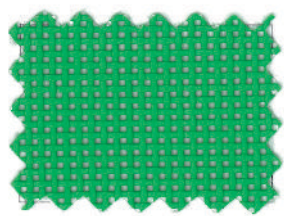
7407-5380



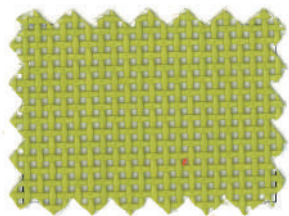
7407-5364



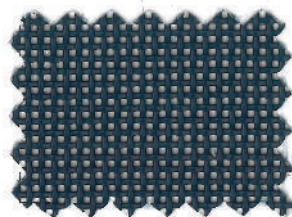
7407-5007



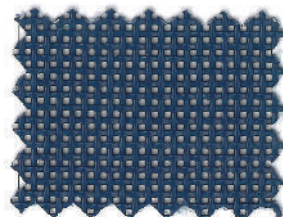
7407-5366



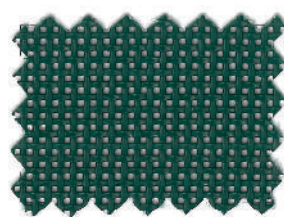
7407-5367



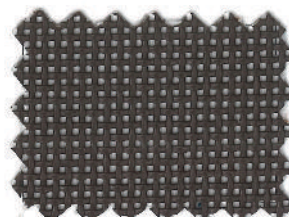
7407-5352



7407-5006

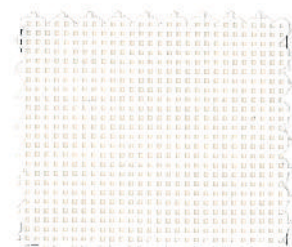


7407-5023

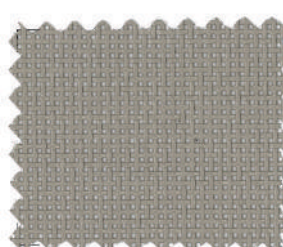


7407-5048

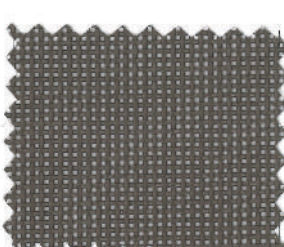
## Flame retardant



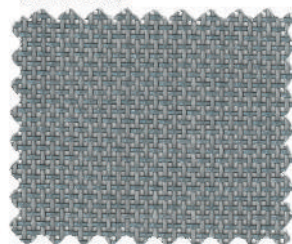
7407FR-5001 



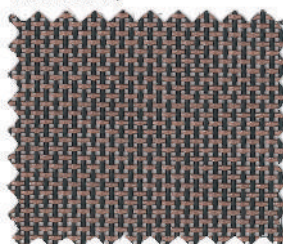
7407FR-5014 



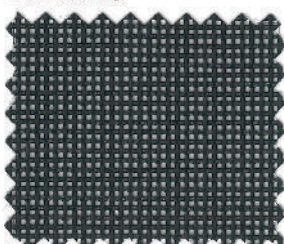
7407FR-5015 



7407FR-5260 




7407FR-5266 



7407FR-5005 



# BATYLINE® (single wire fabric) technical info

Propriétés techniques Technical properties Technische Daten Propiedades técnicas	7407	7407FR 	7406	7350	Normes Standards Normen Normas
Poids / Weight / Gewicht / Peso	500 g/m <sup>2</sup>	500 g/m <sup>2</sup>	660 g/m <sup>2</sup>	725 g/m <sup>2</sup>	EN ISO 2286-2
Laize / Width / Breite / Ancho	180 cm	180 cm	180 cm	180 cm	
Porosité / Openess factor Porosität / Porosidad	22 %	22 %	11 %	10 %	
Propriétés physiques / Physical properties / Physikalische Eigenschaften / Propiedades físicas					
Résistance rupture (chaîne/trame) Tensile strength (warp/weft) Reißkraft (Kette/Schuss) Resistencia a la rotura (urdimbria/trama)	240/240 daN/5 cm	240/240 daN/5 cm	360/330 daN/5 cm	430/410 daN/5 cm	EN ISO 1421
Allongement sous charge 20 daN (chaîne/trame) Elongation under load 20 daN (warp/weft) Reißdehnung bei 20 daN (Kette/Schuss) Alargamiento bajo carga 20 daN (urdimbria/trama)	≤ 2.5 % / ≤ 2.5 %	≤ 2.5 % / ≤ 2.5 %	≤ 2.5 % / ≤ 2.5 %	≤ 2 % / ≤ 2 %	EN ISO 1421
Résistance abrasion / Resistance to abrasion Abriebfestigkeit / Reacción a la abrasión	>120 000 cycles	>120 000 cycles	>120 000 cycles	>120 000 cycles	EN ISO 12947-2 Martindale
Stabilité lumière extrême Extreme light stability Extreme Lichtechtheit Estabilidad luz extrema	ΔE lab < 3 UVA 340 / 2000h	ΔE lab < 3 UVA 340 / 2000h	ΔE lab < 3 UVA 340 / 2000h	ΔE lab < 3 UVA 340 / 2000h	NFT 30-036 (QUVTEST)
Résistance moisissures Mould resistance Schimmelbeständigkeit Resistencia al moho	Méthode A, Excellent Methods A, Excellent Verfahren A, Ausgezeichnet Método A, Excelente	Méthode A, Excellent Methods A, Excellent Verfahren A, Ausgezeichnet Método A, Excelente	Méthode A, Excellent Methods A, Excellent Verfahren A, Ausgezeichnet Método A, Excelente	Méthode A, Excellent Methods A, Excellent Verfahren A, Ausgezeichnet Método A, Excelente	EN ISO 846-A
Températures extrêmes d'utilisation Extreme working temperatures Maximale Anwendungstemperaturen Temperaturas extremas de utilización	-30°C / +70°C	-30°C / +70°C	-30°C / +70°C	-30°C / +70°C	
Réaction au feu / Flame retardancy / Brennverhalten / Reacción al fuego					
Classement Rating Klassifikation Clasificación		M2 B1 conforme / pass / Konform / conforme			NFP 92-507 DIN 4102-1 IMO A652 part 16 (EN 1021 part 1 et 2)
Systèmes de management / Management systems / Managementsysteme / Sistemas de gestión					
Qualité / Quality / Qualität / Calidad					ISO 9001
Environnement / Environment Umwelt / Medioambiental					ISO 14001
Certifications, labels, garanties, recyclabilité / Certifications, labels, warranties, recyclability Zertifizierungen, Kennzeichnung, Garantien, Recyclfähigkeit / Certificaciones, labels, garantías, reciclabilidad					




7407-7407FR

Les caractéristiques techniques indiquées sont des valeurs moyennes avec une tolérance de +/- 5%. Nos produits sont sujets à des évolutions en fonction des progrès techniques et nous nous réservons le droit d'en modifier les caractéristiques à tout moment. Il est de la responsabilité de l'acheteur de nos produits de vérifier la validité des données ci-dessus. Pour l'application de la garantie, se référer aux termes de la garantie applicable disponible sur demande. / Quoted technical characteristics are average values with a +/- 5% tolerance. Our products are subject to improvements resulting from technical developments and we reserve the right to modify their characteristics at any time. The purchaser of our products is responsible for checking the above data. / Bei den angegebenen technischen Daten handelt es sich um Durchschnittswerte mit einer Abweichung von +/- 5%. Unsere Produkte unterliegen Änderungen aufgrund des technischen Fortschritts. Wir behalten uns das Recht vor, die Eigenschaften unserer Produkte jederzeit anzupassen. Es obliegt dem Käufer unserer Produkte, die Gültigkeit der o.g. Daten zu überprüfen. Um die Garantiewirksamkeit sicherzustellen ist es unter Umständen notwendig weitere Dokumente (siehe Garantietext), die auf Anfrage erhältlich sind, einzureichen. Las características técnicas indicadas son valores medios con una tolerancia de +/- 5%. Nuestros productos están sujetos a evolución según los progresos técnicos, reservándonos el derecho de modificar las características en todo momento. Es responsabilidad del comprador de nuestros productos comprobar la validez de los datos anteriores.



# BATYLINE® (double wire fabric) technical info

Propriétés techniques / Technical properties Technische Daten / Propiedades técnicas	7300 / 7301	7300FR 	Normes / Standards Normen / Normas
Poids / Weight / Gewicht / Peso	560 g/m <sup>2</sup>	560 g/m <sup>2</sup>	EN ISO 2286-2
Laize / Width / Breite / Ancho	180 cm	180 cm	
Porosité / Openess factor / Porosität / Porosidad	10 %	10 %	
<b>Propriétés physiques / Physical properties / Physikalische Eigenschaften / Propiedades físicas</b>			
Résistance rupture (chaîne/trame) Tensile strength (warp/weft) Reißkraft (Kette/Schuss) Resistencia a la rotura (urdimbre/trama)	240/210 daN/ 5 cm	240/210 daN/ 5 cm	EN ISO 1421
Allongement sous charge 20 daN (chaîne / trame) Elongation under load 20 daN (warp / weft) Reißdehnung bei 20 daN (Kette/Schuss) Alargamiento bajo carga 20 daN (urdimbre/trama)	≤ 2 % / ≤ 3 %	≤ 2 % / ≤ 3 %	EN ISO 1421
Résistance abrasion / Resistance to abrasion Abriebfestigkeit / Reacción a la abrasión	>120 000 cycles	>120 000 cycles	EN ISO 12947-2 Martindale
Stabilité lumière extrême / Extreme light stability Extreme Lichtechtheit / Estabilidad luz extrema	ΔE lab < 3 UVA 340 / 2000h	ΔE lab < 3 UVA 340 / 2000h	NF T30-036 (QUVTEST)
Résistance moisissures / Mould resistance Schimmelbeständigkeit / Resistencia al moho	Méthode A, Excellent / Methods A, Excellent Verfahren A, Ausgezeichnet / Método A, Excelente	Méthode A, Excellent / Methods A, Excellent Verfahren A, Ausgezeichnet / Método A, Excelente	EN ISO 846-A
Températures extrêmes d'utilisation Extreme working temperatures Maximale Anwendungstemperaturen Temperaturas extremas de utilización	-30°C / +70°C	-30°C / +70°C	
<b>Réaction au feu / Flame retardancy / Brennverhalten / Reacción al fuego</b>			
Classement / Rating Klassifikation / Clasificación	M2 B1 conforme / pass / Konform / conforme	M2 B1 conforme / pass / Konform / conforme	NFP 92-507 DIN 4102-1 IMO A652 part 16
<b>Systèmes de management / Management systems / Managementsysteme / Sistemas de gestión</b>			
Qualité / Quality / Qualität / Calidad			ISO 9001
Environnement / Environment Umwelt / Medioambiental			ISO 14001
<b>Certifications, labels, warranties, recyclability / Certifications, labels, warranties, recyclability Zertifizierungen, Kennzeichnung, Garantien, Recycelfähigkeit / Certificaciones, labels, garantías, reciclabilidad</b>			



Les caractéristiques techniques indiquées sont des valeurs moyennes avec une tolérance de +/- 5%. Nos produits sont sujets à des évolutions en fonction des progrès techniques et nous nous réservons le droit d'en modifier les caractéristiques à tout moment. Il est de la responsabilité de l'acheteur de nos produits de vérifier la validité des données ci-dessus. Pour l'application de la garantie, se référer aux termes de la garantie applicable disponible sur demande.

Quoted technical characteristics are average values with a +/- 5% tolerance. Our products are subject to improvements resulting from technical developments and we reserve the right to modify their characteristics at any time. The purchaser of our products is responsible for checking the above data.

Bei den angegebenen technischen Daten handelt es sich um Durchschnittswerte mit einer Abweichung von +/- 5%. Unsere Produkte unterliegen Änderungen aufgrund des technischen Fortschritts. Wir behalten uns das Recht vor, die Eigenschaften unserer Produkte jederzeit anzupassen. Es obliegt dem Käufer unserer Produkte, die Gültigkeit der o.g. Daten zu überprüfen. Um die Garantiewirksamkeit sicherzustellen ist es unter Umständen notwendig weitere Dokumente (siehe Garantietext), die auf Anfrage erhältlich sind, einzureichen.

Las características técnicas indicadas son valores medios con una tolerancia de +/- 5%. Nuestros productos están sujetos a evolución según los progresos técnicos, reservándonos el derecho de modificar las características en todo momento. Es responsabilidad del comprador de nuestros productos comprobar la validez de los datos anteriores.









# PADDED FABRIC technical info

Composizione / Composition: 85,5% Pvc - 14,5% Pe





















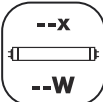



CARATTERISTICHE CHARACTERISTICS		NORMA TEST	UNITA' UNITS	VALORI VALUE	TOLLERANZA ALLOVANCE
Peso totale / Total Weight		UNI 2286 - P 2°	gr/m <sup>2</sup>	650	± 5%
Peso supporto / Support Weight		UNI 2286 - P 2°	gr/m <sup>2</sup>	75	± 5%
Spessore / Thickness		UNI 2286 - P 3°	mm	1	± 0,1
Resistenza a trazione Tensile Strenght	Long. Long.	UNI 1422	N	300	minimo minimum
	Trasv. Across	UNI 1422	N	150	minimo minimum
Allungamento a rottura Elongation Strenght	Long. Long.	UNI 1422	%	30	minimo minimum
	Trasv. Across	UNI 1422	%	150	minimo minimum
Resistenza a lacerazione Tear Resistance	Long. Long.	UNI 4818 / P.9°	N	60	minimo minimum
	Trasv. Across	UNI 4818 / P.9°	N	70	minimo minimum
Resistenza al distacco tra spalmatura e supporto Peel adhesion	Long. Long.	UNI 2411	N	25	minimo minimum
	Trasv. Across	UNI 2411	N	25	minimo minimum
Infiammabilità / Flammability		MVSS 302	Inch	A.E.	
Determinazione della resistenza ai funghi da parte dei materiali composti da polimeri sintetici Resistance of Synthetic Polymeric Material to Fungi		ASTM G - 21 - 96	Rapporto di crescita Growth ratio	Nessuna crescita No growth	













## SYMBOLS

 For indoor use.	 Stackable item.	 Conformity to the European Community instructions.
 For indoor and outdoor use.	 100% recyclable polyethylene.	 Recycling and disposal of electronic waste (WEEE).
 Outdoor version on request (IP55).	 European Community registered model.	

## LIGHTING SYMBOLS

 Protected against the intrusion of solid objects $\varnothing > 12$ mm, not against water.	 Standard lamp base for E27 - 27 mm light bulb.	 RGB lighting system.
 Protected against the intrusion of solid objects $\varnothing > 1$ mm and splashing water.	 Lamp base for G4 halogen bulb.	 Item compatible with Candy Light.
 Protected against the intrusion of dust and water jets.	 Lamp base for GU10 spotlight.	 Insulation class 1.
 Fully protected against the intrusion of dust and immersion in water.	 Lamp base for G13 neon tube.	 Insulation class 2.
 Small lamp base for E14 - 14 mm light bulb.	 Neon tube lighting system.	 Insulation class 3.
 Medium lamp base for E26 - 26 mm light bulb.	 LED technology lighting system.	 Device proper to direct assembly onto normally inflammable surfaces.
 Lighting through energy saving bulb. The upper figure shows the number of allowed bulbs. The lower figure shows the MAXIMUM recommended power.		 Lighting through energy saving fluorescent spotlight. The upper figure shows the number of allowed spotlights. The lower figure shows the MAXIMUM recommended power.
 Lighting through neon tube. The upper figure shows the number of allowed neon tubes. The lower figure shows the MAXIMUM recommended power.		 Lighting through energy saving globe bulb. The upper figure shows the number of allowed bulbs. The lower figure shows the MAXIMUM recommended power.
 Lighting through flexible LED tube. The lower figure shows the MAXIMUM recommended power.		 Lighting through circular T9 neon tube. The upper figure shows the number of allowed neon tubes. The lower figure shows the MAXIMUM recommended power.

## WIRING SYMBOLS

 Wiring with metal clamp. IP20 protection. Diameter 11 cm.	 Wiring with special base for KIT LED 3 WATT. IP55 protection. Diameter 11,6 cm.
 Wiring with metal base. IP55 protection. Diameter 10 cm. Fastening by hex screw key.	 Wiring with plastic screw base. I3 - IP20 protection. E3 - IP55 protection. Diameter 6 cm.
 Wiring with metal base. IP55 protection. Diameter 20 cm. Fastening by hex screw key.	 Wiring with plastic screw base. I3 - IP20 protection. E3 - IP55 protection. Diameter 10 cm.
 Wiring with plastic base and metal inserts. I2 - IP20 protection. E2 - IP55 protection. Diameter 10 cm. Fastening by slot screwdriver.	 Wiring with plastic screw base. I3 - IP20 protection. E3 - IP55 protection. Diameter 15 cm.
 Wiring with plastic base and LED CANDY LIGHT. IP44 protection. Diameter 10 cm.	 Special metal base. IP20 protection. Several sizes.

## MATERIAL PROPERTIES

---

Material: Polyurethane - PU  
Production process: injection molding  
High durability  
Very good thermal resistance  
Material is 100% recyclable

## WARNING

---

- Keep away from excessive heat sources.
- Avoid any improper use. Do not stand on the products. When the product has to be moved, lift the product off the ground in order to avoid damage.
- Carefully comply with the maintenance & cleaning instructions.
- Slight differences in shade may be present between the various elements, and, in case of products purchased at different times, the time lapse and climatic-natural factors may cause variations in colour and/or shade, without compromising the structure.
- The afore-mentioned differences are not grounds for claims and/or the return of goods.

## MAINTENANCE & CLEANING

---

- To prevent dust and dirt from sticking to the plastic surfaces, periodically clean the products with a soft cloth and neutral liquid soap diluted in water, especially if the surface comes into contact with highly coloured substances (such as coffee, oil, etc.).
- Avoid using ethanol or any liquids containing, even in small amounts, acetone, trichloroethylene or ammonia (solvents in general).
- Avoid rubbing the lacquered surface.
- For metal parts use specific cleaners, avoiding the use of abrasive powders and flakes that could scratch the surface.

## SUSTAINABILITY & RECYCLING

---

All SLIDE products are 100% recyclable. SLIDE has a closed production cycle with no health prejudicial emissions and complying with ecological sustainability rules.

When a product reaches the end of its life, do not treat the product or any of its parts as domestic waste. Dispose by sending to differentiated collection centres.

## RESPONSIBILITY & RETURNS

---

SLIDE declines any liability to damages caused to things or persons by an illegitimate use of the product. SLIDE won't accept any returned goods without having checked the kind of defects first.

## WARRANTY

---

SLIDE products are guaranteed against all manufacturing faults, granted that the items are appropriately used, for twenty-four (24) months from the date of purchase upon presentation of the invoice.

LED KITS only are guaranteed for twelve (12) months from the date of purchase.

Warranty doesn't include parts that are subject to wear and tear due to usage, batteries when provided, wiring and electrical parts that do not have manufacturing faults.